

i-Key 2032 Borderless PK7.2 User Manual

<p>Operating System Requirement:</p> <p>Windows 2000</p> <p>Windows XP</p> <p>Windows Vista</p>	<p><u>Content</u></p> <ol style="list-style-type: none">1. Install the software<ol style="list-style-type: none">1.1. Install from CD-Rom or,1.2. Install from web site2. Change i-Key PIN3. View the Digital Certificate
--	---

1. Install the software

Note: You should logon with administrator privileges to Windows Vista, XP or 2000 in order to install the software properly.

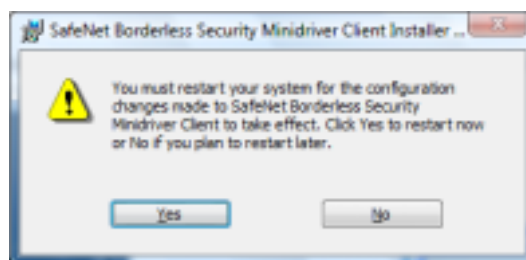
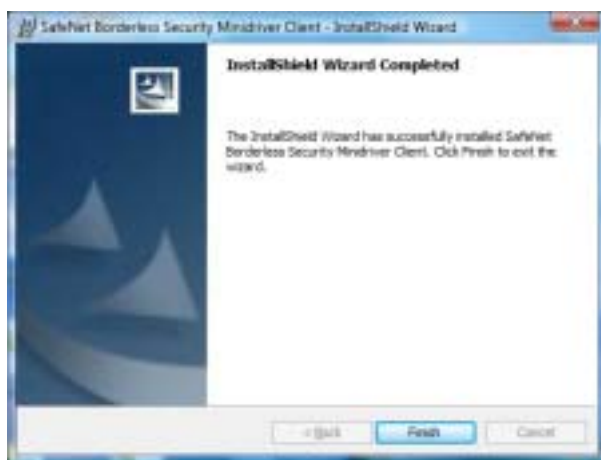
You may install the software by CD-Rom (1.1) or from web site (1.2)

1.1 Install from CD-Rom

1. Close all programs and applications.
2. Uninstall *all* previous version of the i-Key software (if applicable).
3. Insert the software CD-Rom to your computer's CD-Rom drive. The installation program starts automatically if autorun feature is enabled; or you can browse the CD-Rom to start the installation program manually by clicking on the **BSec7-2-client.msi**
4. Click **Next** and then click **Install** to run the installation.



5. Click **Finish** and you **must** restart your computer to complete the installation.



1.2 Install from web site

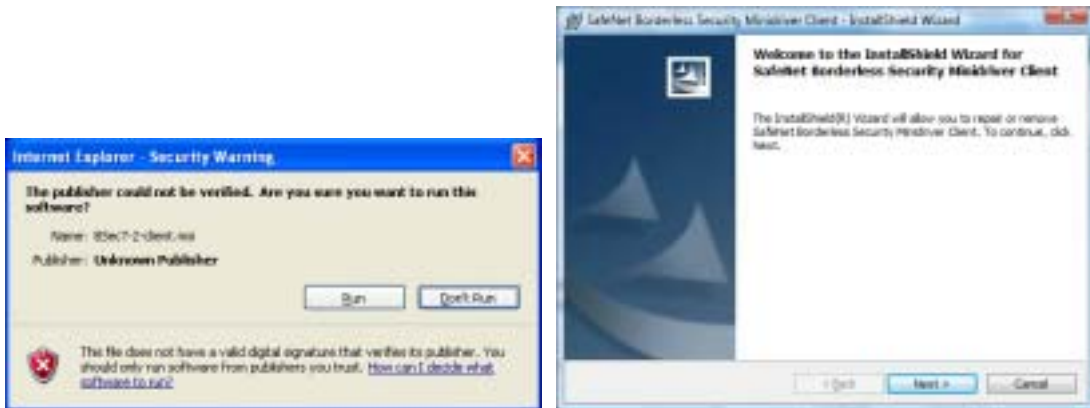
1. Go to the web site https://www.dg-sign.com/eng/frame_ikey.htm
2. Click on the software to download



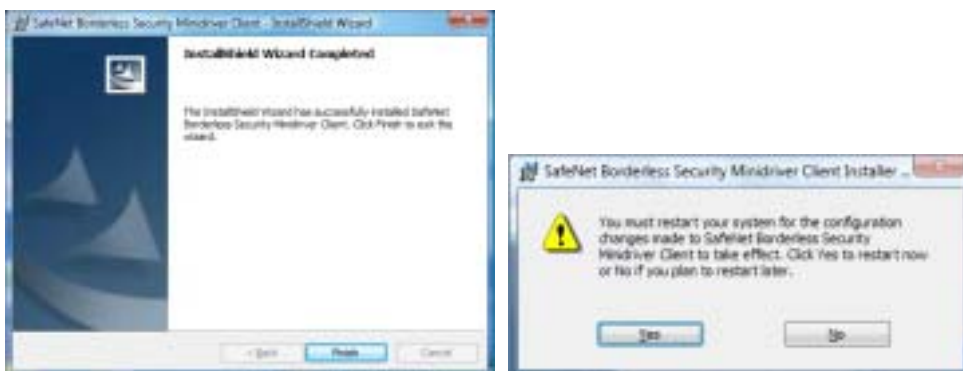
3. Click **Run** to start the download



4. Click **Run** and then **Next** to run the installation.



5. Click **Finish** and you **must** restart your computer to complete the installation.



2. Change i-Key PIN (Optional)

1. Insert the i-Key into the computer
2. From the **Start** menu, select **Programs > SafeNet > Borderless Security PK > SafeNet CIP Utilities**
3. Right-click on the i-Key you want to change PIN, and then select **Change PIN** from the shortcut menu.
4. The Change PIN window appears.
 - a) In the **Old PIN** field, enter your old (current) PIN. For the first time login, use the NEW PIN Mailer password.
 - b) In the **New PIN** field, enter your new PIN
 - c) In the **Re-enter New PIN** field, enter your new PIN again for confirmation
 - d) Click **OK** to update the change

Note:

- **Entering the wrong PIN 10 times will block your i-Key.**
- **The minimum length of PIN is 4 alphanumeric characters and the maximum length is 20 alphanumeric characters.**

3 View the Digital Certificate

3.1 View from Borderless

1. From the **Start** menu, select **Programs > Safenet > Borderless Security PK7 > Safenet CIP Utilities**
2. Select the i-Key slot to view the digital certificate

